



# Practice Paper 2

ENGLISH CORE – XII

(2023-24)

Time allowed: 3 Hrs.

Maximum Marks: 80

**General Instructions:**

1. The Question Paper contains THREE sections – READING, WRITING and LITERATURE.
2. Attempt questions based on specific instructions for each part.

**SECTION A – READING SKILLS (20 Marks)**

**READING COMPREHENSION THROUGH UNSEEN PASSAGES**

**1. Read the following text. (12 Marks)**

1. By 2025, two-thirds of the world's population may face acute water shortage, according to a 2018 data by the United Nations. The problem could be compounded in the face of climate change, which is altering patterns of weather around the world, causing shortages and droughts in some areas and floods in others.
2. Thanks to technology, countries worldwide have adopted some way or the other to meet their water needs. Desalination of sea and brackish water is one of them. A total of 177 countries run desalination plants to extract freshwater, with many entirely dependent on such plants to meet their everyday demands. However, the desalination process has its own shortcomings. The primary by-product of desalination process is brine, which is usually pumped back into the sea. The salty, toxic brine sinks to the seafloor and wreaks havoc on marine ecosystem, by reducing dissolved oxygen levels and spiking salt content.
3. A recent UN-backed study has found that global brine production is 50% higher than previous estimates. The study said that 16,000 desalination plants worldwide pump out 142 million cubic metres of salty brine every day, to produce 95 million cubic metres of freshwater. About 55% of the brine is produced by plants in Saudi Arabia, the United Arab Emirates and Qatar, according to the study.
4. Due to its energy consumption, desalination is a costly affair. Currently, approximately 1% of the world's population is dependent on desalinated water to meet daily needs. A number of small countries, such as the Maldives, Malta and the Bahamas, meet all their water needs through the desalination process. There's been a major expansion of desalination plants around the world over the last few years.
5. Brine has high salinity compared to the same amount of seawater. It also often includes chemicals such as chlorine and copper used in desalination, which, when let into the sea, proves toxic to marine life. Brine is denser than typical seawater and sinks to the seafloor. High salinity (coupled with high sea temperature) can cut levels of oxygen in seawater with profound impact on shellfish, crabs and other creatures on the seabed, leading to ecological effects observable throughout the food chain.

6. Instead of letting the brine into the sea, it could be used for some good purposes, say scientists. They believe that a large number of metals and salts in the effluent, including uranium, strontium, sodium and magnesium have the potential to be mined. Brine has also been successfully used to cultivate the dietary supplement spirulina (*a type of cyanobacteria that grows in both fresh and salt water and has many health benefits*). Salt from brine can be used for de-icing – removing ice and snow on the road. The salt dissolves into the liquid water in the ice and lowers its freezing point.

*The Hindu in School (Edited)*

**Answer the following questions, based on the passage above. (12 Marks)**

- (i) Select the option that is the most appropriate in the context of the first paragraph. (1 Mark)
- (a) Climate change has already caused acute water shortage in the world.  
 (b) Climate change may worsen the availability of fresh water in the world.  
 (c) Climate change is triggered by the alternation of droughts and water shortages, and floods.  
 (d) Climate changes may become unmanageable by the year 2025.
- (ii) Complete the sentence appropriately. (1 Mark)
- Pumping brine back into the sea is a very bad idea because .....*
- (iii) Select the option that is similar in meaning to the expression 'wreaks havoc'. (1 Mark)
- (a) greatly disturbs (c) severely damages  
 (b) poses a threat to (d) slowly poisons
- (iv) Which of the following options BEST completes the statement below? (1 Mark)
- A rise in the number of desalination plants is indicative of .....*
- (a) mankind's growing dependence on technology  
 (b) falling availability of potable freshwater worldwide  
 (c) a rise in demand for packaged purified water worldwide  
 (d) improved health awareness in the world
- (v) Complete the sentence appropriately with suitable information from the passage. (1 Mark)
- One major drawback of the desalination process is that it is detrimental to the sea eco-system. The other drawback is .....*
- (vi) Explain, in about 40 words, how brine is different from the ordinary seawater. (2 Marks)
- (vii) Share evidence from the text, in about 40 words, to support the view that the problem of excessive brine from water desalination plants can be solved in an environment-friendly way. (2 Marks)
- (viii) How does the following, impact the reader, whose fresh water needs are fulfilled round the year through rivers, ponds and ground water? Answer in about 40 words. (2 Marks)

(ix) Read the five titles (A) to (E) given below.

(1 Mark)

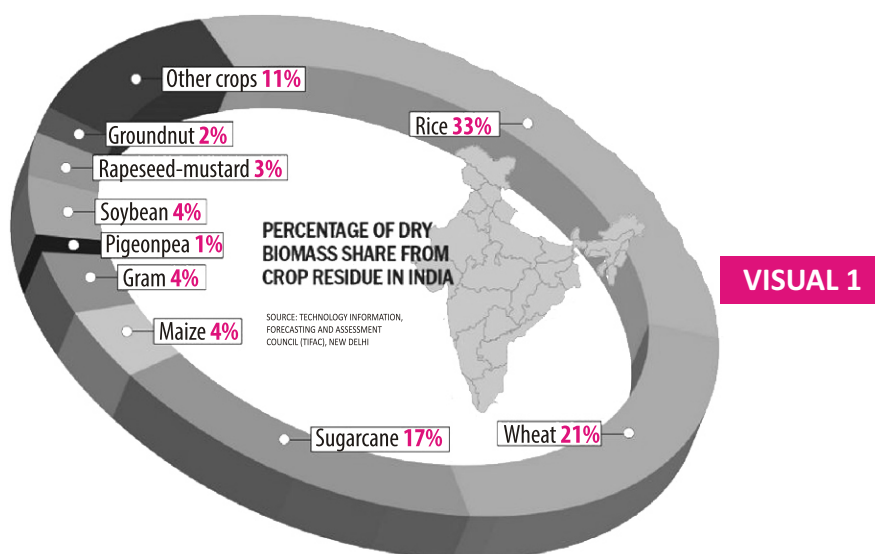
- (A) CHANGING CLIMATE AND WEATHER PATTERNS (D) THIRST COMES FIRST  
 (B) DESALINATION AT WHAT COST? (E) WATER, WATER EVERYWHERE!  
 (C) DROUGHT AND FLOOD PRONE AREAS OF THE WORLD

Identify the option that displays the title(s) that IS/ARE SUITABLE for the passage.

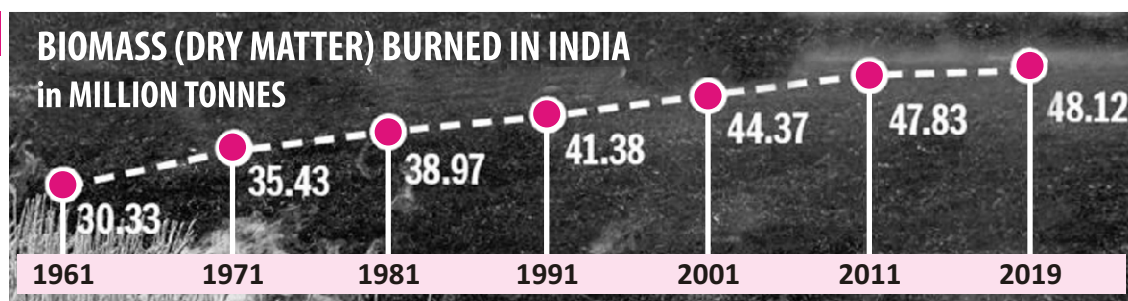
- (a) Only (A) (c) (C) and (D)  
 (b) (B) and (D) (d) Only (E)

2. Read the following text.

(10 Marks)



VISUAL 2



- Every October-November stubble burning hits the headlines due to its link with air pollution in north-western India, especially Delhi. This practice poses a serious threat to the environment and human health. It leads to the loss of biodiversity of agricultural lands and the deterioration of soil fertility. Estimates show that burning 1 tonne of paddy straw can result in the loss of around 5.5-kg nitrogen, 2.3-kg phosphorus, 2.5-kg potassium and 1.2-kg sulphur (other than organic carbon) content from the soil, apart from the loss of beneficial micro-organisms that are essential to maintain soil fertility.
- Globally, residue burning is significantly higher in Asia compared to other continents. The rice-wheat growing belt of South Asian countries is a global hotspot of stubble burning and the

same is true for India. The north-western states, especially Punjab, Haryana and Uttar Pradesh, witness the burning of paddy straw by farmers.

3. As per studies, over 500 million tonnes (MT) of crop residue is generated annually in India. The generation of crop residue is highest in Uttar Pradesh (60 MT), followed by Punjab (51 MT). Among various crops, cereals generate maximum residue (352 MT), followed by fibres (66 MT), oilseeds (29 MT), pulses (13 MT) and sugarcane (12 MT).
4. Most of the farmers in the rice-wheat growing region of the country use expensive combine harvesters for planting and harvesting the crops. No doubt these bulky machines are very versatile in nature and extremely efficient, but they generate a huge amount of stubble (around 9 tonnes per hectare) consisting of tall stalks, up to 30 cm high, which are difficult to incorporate into the soil.

*The Tribune (Abridged)*

**Answer the following questions, based on the passage above. (10 Marks)**

- (i) Infer two serious threats that stubble burning poses to the environment. Answer in about 40 words. (2 Marks)
- (ii) Complete the sentence appropriately. (1 Mark)  
*According to paragraph 2, residue burning is significantly higher in Asia compared to other continents most probably because .....*
- (iii) Choose the option that uses the word 'hotspot' in the same sense as it is used in paragraph 2 of the passage. (1 Mark)
  - (a) Connaught Place is one of the best hotspots in Delhi.
  - (b) You will find a free high-speed wi-fi hotspot in all good cafés.
  - (c) The glacier has become a major hotspot between the two warring nations.
  - (d) "Fire engines were required to visit the scene again last night after hotspots appeared to be in danger of re-igniting."
- (iv) Identify the sugarcane growing farmer from the following statements. (1 Mark)
  - (a) "I'm glad that my crop produces less than twenty per cent of the stubble produced by cereals."
  - (b) "My crop produces only negligible amount of stubble."
  - (c) "The amount of stubble my crop produces is only marginally higher than that of pulses."
  - (d) "They say my crop produces the highest amount of stubble."
- (v) According to visual 1, one-third of all crop residue comes from ..... (1 Mark)
- (vi) Which of the following options BEST describes the trend in visual 2? (1 Mark)  
*The burning of biomass in India has shown a ..... since 1961.*

- (a) steady rise (c) steep rise  
 (b) constant fall (d) sharp downfall
- (vii) Explain how using combine harvester is both beneficial and harmful. Answer in about 40 words. (2 Marks)
- (viii) On the basis of your understanding of the passage, infer one viable and long lasting solution to the problem of bio-mass residue (stubble) burning. (1 Mark)

### SECTION B – CREATIVE WRITING SKILLS (18 Marks)

**Note: All details presented in the questions are imaginary and created for assessment purpose.**

**3. Attempt ANY ONE of two, in about 50 words. (4 Marks)**

- A. You are Vani Limbu, the President of the Skiing Club of Sikkim Public School, Gangtok. Write a notice, in about 50 words, for the school notice board, informing the students of classes IX to XII about a skiing camp for beginners and inviting them to join it. Include details like the dates, time and venue of the camp and the applicable fee. Also mention where and when the interested candidates can register themselves.

OR

- B. You are Rajat Nathaniel, the Principal of Palampur Senior Secondary School, Palampur, Himachal Pradesh. Write a notice for the student notice board, in about 50 words, informing the students of classes XI and XII about a tour to Tamil Nadu and Puducherry in the forthcoming winter break. Invite the students to join the tour and give details like the duration of the tours, some worth seeing places and tour charges. Say when, where and how students can register for the tour.

**4. Attempt ANY ONE of two, in about 50 words. (4 Marks)**

- A. Your cousin Manya Khandelwal is getting married to Pushkar Roy (son of Dr Christopher Roy and Mrs Sheila Roy of Chandigarh). On behalf of Manya's parents Mr. and Mrs. S. R. Khandelwal, draft a formal invitation to her wedding. Invent the necessary details like the date, time and venue of the wedding, hosts' address and RSVP.

OR

- B. You are Angelina Crowley, a friend of Manya Khandelwal. You have received an invitation to her wedding. Write a formal reply to it expressing your acceptance in about 50 words.

**5. Attempt ANY ONE of two, in about 120-150 words. (5 Marks)**

- A. Write a letter to the Editor of The Hindu, Bahadurshah Zafar Marg, ITO, New Delhi-110002, expressing your opinion on the issue of stubble burning by the farmers in North India and suggest some practical and eco-friendly ways of dealing with the problem.

Use the given cues along with your own ideas to compose this letter. You are Ranjit Singh, a concerned city resident.

**Disadvantages of stubble burning**

- ◆ emits toxic pollutants
- ◆ affects soil fertility
- ◆ destroys nutrients in the soil
- ◆ increases soil erosion

**Eco-friendly solutions**

- ◆ use of happy seeders that can uproot the stubble
- ◆ use of bio-enzymes that decompose stubble and turn it into manure

OR

- B. You wish to apply to one of the positions in the following employment notice. Write a cover letter and a CV for it.

**In your cover letter, you should:**

- ◆ introduce yourself and express your interest in one of the positions
- ◆ list some reasons why you should be hired
- ◆ express your willingness to attend a phone interview, and training on selection
- ◆ say your CV is attached to the cover letter

**OPEN POSITIONS**

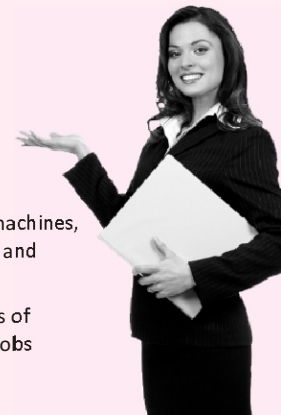
Sales boys/girls to manage sales registers/machines, assistant chefs (wraps, pizzas, burgers, fries and soft drinks) and cleanliness assistants.

Young school boys and girls at least 16 years of age can apply for short time and part time jobs at our new chain of fast food restaurants *Food-Mood* in all the major cities of India.

**The candidate should be at least a matriculate and should have basic knowledge of computers.**

**APPLY NOW!**

Send the latest CV with a cover letter through e-mail to Manager HR at [hiringsolutions@empex.com](mailto:hiringsolutions@empex.com)

**In your CV, you should include the following:**

- ◆ Your name
- ◆ Your address – postal address, e-mail, phone number
- ◆ A statement of your current career objective
- ◆ A description of any job experience
- ◆ Some personal qualities and attributes that can get you selected
- ◆ Educational qualifications
- ◆ Information about your hobbies, interests and travel
- ◆ Personal details like date of birth, family, health etc.

6. Attempt ANY ONE of two, in about 120-150 words. (5 Marks)

- A. Teenagers these days are a stressed lot but not many elders recognize the fact and feel the need of doing anything about it. The Indian Association of Child Psychologists (IACP) recently organised an 'Awareness Walk' on the issue. Your school was the main host of the event in which more than 50 schools of the region participated.

You were asked to cover this event as the student correspondent of the school newsletter 'The Lighthouse'. Write a report on the event in about 150 words. Support your ideas with the information given in the following flyer.

Tamil Nadu Parents and Teachers Association (Registered) Presents

**TEEN STRESS AWARENESS**

**4<sup>th</sup> ANNUAL A-THON WALK**

**Saturday, 24th December 2023**  
Registration 9.00 AM  
Indian Community Centre,  
Trichy, Tamil Nadu

**Starts at Golden Rock and finishes at Tiruchirapalli Rock Fort**

**Sponsored by**

- Tamil Nadu Children's Welfare Trust
- Indian Association of Child Psychologists
- Institute of Mental and Emotional Health, India
- Dettol
- P&G

OR

- B. Although machines are increasingly being used in the country to clean and maintain sewerage systems, yet we often hear of news of cleanliness workers dying of asphyxiation while cleaning a blocked manhole or a sewerage line.

As a columnist of 'Environment Watch', an e-zine, write an article in about 150 words, drawing the reader's attention to the problem and suggesting a permanent solution to it. You may like to refer to some recent cases of worker deaths due to asphyxiation.

**SECTION C – LITERATURE TEXTBOOK AND SUPPLEMENTARY READING TEXT (40 Marks)**

7. Read the given extracts and answer the questions for ANY ONE of the two, given. (6 Marks)

- A. Driving from my parent's home to Cochin last Friday morning, I saw my mother, beside me, doze, open mouthed, her face ashen like that of a corpse and realised with pain that she was as old as she looked but soon put that thought away, and looked out at Young Trees sprinting, the merry children spilling out of their homes,

- (i) The expression 'her face ashen like that of a corpse' is an example of literary device called ..... (1 Mark)
- (ii) Complete the sentence appropriately. (1 Mark)

*The expression 'her face ashen like that of a corpse' is apt analogy for the poet's mother's face because .....*

(iii) Bring out the element of contrast in the imagery in this extract. (1 Mark)

(iv) 'Put that thought away.' Which of the following options BEST describes the thought that the poet had?

- (a) "Is she too tired and fast asleep."
- (b) "It's hard to believe she gave birth to me."
- (c) "I think I should have spent more time with her."
- (d) "At her age God knows when I may lose her."

(v) Select the word that will NOT complete the sentence appropriately. (1 Mark)

*The description of the mother in this extract evokes a feeling of .....*

- (a) sadness
- (b) hope
- (c) worry
- (d) fear

(vi) State whether the given statement is TRUE or FALSE with reference to the extract. (1 Mark)

*The expression "Trees sprinting" actually describes an optical illusion the poet has while driving her car.*

OR

B. .... yes, in spite of all,  
Some shape of beauty moves away the pall  
From our dark spirits. Such the sun, the moon,  
Trees old, and young, sprouting a shady boon  
For simple sheep; and such are daffodils  
With the green world they live in; and clear rills

(i) Complete the sentence appropriately.

*The word 'all' in the expression 'in spite of all' refers to .....*

(ii) According to the extract, beauty has the power of

- (a) beautifying natural objects
- (b) dispelling sadness and gloom
- (c) making the world green
- (d) maintaining a balance in nature

(iii) State whether the given statement is TRUE or FALSE.

*These lines evoke images or feelings of peace, simplicity and bliss.*

(iv) Figure out and write the rhyming scheme used in this extract.

(v) Complete the sentence appropriately.

*The poet has given examples of celestial bodies as well as flora and fauna to emphasise .....*



(vi) Select the option that is NOT TRUE about the lack of punctuation at the end of line 2 in the extract.

- (a) Creates a sense of continuity and flow that connects the line with the third line
- (b) Encourages the reader to continue reading seamlessly without any pause
- (c) Creates a sense of anticipation and expectation for the reader
- (d) Encourages a revisit to the ideas in the preceding lines

**8. Read the given extracts and answer the questions for ANY ONE of the two, given. (4 Marks)**

A. It was first ascertained that this was not the work of Khader Mian Saheb or Virasami Naicker, both famed for their ability to swallow sheep whole. Surely, a tiger was at work. The villagers ran to inform the Maharaja. The Maharaja announced a three-year exemption from all taxes for that village and set out on the hunt at once.

The tiger was not easily found. It seemed as if it had wantonly hid itself in order to flout the Maharaja's will.

The Maharaja was equally determined. He refused to leave the forest until the tiger was found. As the days passed, the Maharaja's fury and obstinacy mounted alarmingly. Many officers lost their jobs.

One day when his rage was at its height, the Maharaja called the dewan and ordered him to double the land tax forthwith.

(i) It was first ascertained that this was not the work of Khader Mian Saheb or Virasami Naicker, both famed for their ability to swallow sheep whole.

*The underlined part in the sentence above is an example of.....*

- (a) hyperbole
  - (b) understatement
  - (c) irony
  - (d) eulogy
- (ii) Based on your understanding of the extract, give one example of the Maharaja's obstinacy and one example of his fury.
- (iii) 'A tiger was at work'. What indication did the Maharaja and his men have to arrive at this conclusion?
- (iv) The writer's style and tone in this extract are marked with
- (a) dislike and ridicule
  - (b) appreciation and flattery
  - (c) wit and humour
  - (d) irony and satire

OR

B. My Antarctic experience was full of such epiphanies, but the best occurred just short of the Antarctic Circle at 65.55 degrees south. The *Shokalskiy* had managed to wedge herself into a thick white stretch of ice between the peninsula and Tadpole Island which was preventing us from going any further. The Captain decided we were going to turn around and head back north, but before we did, we were all

instructed to climb down the gangplank and walk on the ocean. So there we were, all 52 of us, kitted out in Gore-Tex and glares, walking on a stark whiteness that seemed to spread out forever. Underneath our feet was a metre-thick ice pack, and underneath that, 180 metres of living, breathing, salt water. In the periphery Crabeater seals were stretching and sunning themselves on ice floes much like stray dogs will do under the shade of a banyan tree. It was nothing short of a revelation: everything does indeed connect.

(i) The word 'epiphanies' as used in the extract means which of the following?

- (a) important/surprising experiences      (c) painful realisations  
(b) rude shocks      (d) tense moments

(ii) '...much like stray dogs will do under the shade of a banyan tree.'

*Identify the literary device in the above line.*

(iii) Say whether the following statement is TRUE or FALSE in the context of the extract.

The experience described here by the author and company was part of a planned programme.

(iv) All except two of the following words sum up the author's experience at this moment. Identify those two words.

1. Overwhelmed 2. Nostalgic 3. Happy 4. Grateful 5. Disappointed 6. Amazed

- (a) 1 and 3      (c) 2 and 5  
(b) 3 and 4      (d) 4 and 6

**9. Read the given extracts and answer the questions for ANY ONE of the two, given. (6 Marks)**

A. Early in the Champaran action, Charles Freer Andrews, the English pacifist who had become a devoted follower of the Mahatma, came to bid Gandhi farewell before going on a tour of duty to the Fiji Islands. Gandhi's lawyer friends thought it would be a good idea for Andrews to stay in Champaran and help them. Andrews was willing if Gandhi agreed. But Gandhi was vehemently opposed. He said, "You think that in this unequal fight it would be helpful if we have an Englishman on our side. This shows the weakness of your heart. The cause is just and you must rely upon yourselves to win the battle. You should not seek a prop in Mr. Andrews because he happens to be an Englishman".

(i) Complete the sentence appropriately.

A 'pacifist' is someone who .....

(ii) Complete the following analogy with an appropriate word from the extract.

support : prop : : strongly : .....

(iii) Which of the following statements is MOST LIKELY to have been made by Charles Freer Andrews in his conversation with Gandhi Ji's lawyer friends?

- (a) "Why should I stay here any longer?"  
(b) "I may stay on if Mr Gandhi needs my help."

- (c) I cannot postpone my departure for the Fiji Islands."
- (d) "You need my help just because I'm an Englishman."
- (iv) According to Gandhi Ji, how was the 'fight' unequal but the 'cause' just?
- (v) Choose the option(s) that correctly list(s) the character traits of Gandhi as revealed in the extract.
1. Strong convictions 2. Self-dependence 3. Determination 4. Stubbornness
- (a) 1 and 3 (c) Only 4
- (b) 2 and 4 (d) All except 4
- (vi) According to the extract, Gandhi Ji's associates learnt a valuable lesson in ..... from the incident involving Charles Freer Andrews?
- (a) shrewd politics
- (b) ways of conducting agitations
- (c) self-reliance
- (d) being helpful to others

OR

- B. The experience had a deep meaning for me, as only those who have known stark terror and conquered it can appreciate. In death there is peace. There is terror only in the fear of death, as Roosevelt knew when he said, "All we have to fear is fear itself." Because I had experienced both the sensation of dying and the terror that fear of it can produce, the will to live somehow grew in intensity. At last I felt released – free to walk the trails and climb the peaks and to brush aside fear.
- (i) What experiencing is the narrator referring to here?
- (ii) On the basis of your reading of the extract, say whether the following statement is TRUE or FALSE?
- The author feels that only those who have experienced and overcome fear can understand the meaning of the experience he had.*
- (iii) Complete the sentence appropriately.
- Two things that the author, according to the extract, was afraid of were .....*
- (iv) This extract gives an expression to the author's final sense of.....
- (a) fear (c) struggle
- (b) triumph (d) anxiety
- (v) The author quotes Roosevelt in order to .....
- (vi) All of the following quotes second the idea of overcoming fear as is evident in the extract EXCEPT

(1)

"DO THE THING YOU FEAR  
TO DO AND KEEP ON DOING IT...  
THAT IS THE QUICKEST  
AND SUREST WAY EVER  
YET DISCOVERED TO  
**CONQUER FEAR.**"

(a) Option 1

(b) Option 2

(2)

"THE BEAUTIFUL THING  
ABOUT FEAR IS  
WHEN YOU RUN TO IT.  
IT RUNS AWAY."

(3)

The best way to overcome  
**FEAR** is to face with  
equanimity the situation of  
which one is **AFRAID.**

(c) Option 3

(d) Option 4

(4)

"FEAR KILLS  
**MORE**  
DREAMS  
**THAN**  
**FAILURE**  
EVER WILL."

**10. Answer ANY FIVE of the following six questions, in about 40-50 words each. (5 × 2 = 10 Marks)**

(i) Does Pablo Neruda in his poem "Keeping Quiet" advocate total inactivity and death? Say 'yes' or 'no' and give reasons in support of your view.

(ii) What kind of attitude do the motorists have to the roadside stand and its owner?

(A Roadside stand)

(iii) Do you think the story "The Last Lesson" is true in the context only of the French districts of Alsace and Lorraine or any region or country subjugated by another region or country? Justify your answer with a reason or example.

(iv) "The bag was his. The canister belongs to the man who owns the tea shop." Bring out the irony in this authorial comment about Saheb.

(Lost Spring)

(v) How was Subbu instrumental in bringing the career of a talented but temperamental actress to an abrupt end?

(Poets and Pancakes)

(vi) Give two reasons why Rudyard Kipling refused to be interviewed?

(The Interview)

**11. Answer ANY TWO of the following three questions, in about 40-50 words each. (2 × 2 = 4 Marks)**

(i) The 'third level' does not exist in time and space. Do you agree or disagree? Comment with reference to Jack Finney's story "The Third Level".

(ii) Do you think 'hatred' against a member of the enemy race, community or group is justifiable? Comment with reference to the example of Dr Sadao in the story "The Enemy".

(iii) List any two points of similarity in the experiences of both Zitkala-Sa and Bama.

(Memories of Childhood)

**12. Answer ANY ONE of the following two questions, in about 120-150 words. (1 × 5 = 5 Marks)**

A. Is it natural for teenagers to have unrealistic dreams? What would you think are the benefits and disadvantages of such fantasising? Discuss with reference to the story "Going Places".

OR

B. Suppose Miss Willmansson, the ironmaster's daughter, and Captain von Stahle, the rattrap pedlar, meet after years and recognise each other. What kind of conversation do you think they will have?

Use your imagination and write a short conversation between the two with reference to the story "The Rattrap".

13. Answer ANY ONE of the following two questions, in about 120-150 words. (1 × 5 = 5 Marks)

A. Derry does return to Mr. Lamb but too late.

Imagine you are Derry. Write a diary entry expressing your feelings on finding Mr. Lamb dead.

**In your diary entry you should**

- ◆ describe the scene when you arrived at Mr. Lamb's house
- ◆ express your emotions and state of mind on discovering that Mr. Lamb was no more
- ◆ say what insight into the philosophy of life the incident gave you

OR

B. Would you say that Dr Sadao in Pearl S. Buck's story "The Enemy" was no less patriotic than Mr. M. Hamel, the teacher in the story "The Last Lesson" by Alphonse Daudet? Give reasons in view of your answer.

## ANSWERS

### SECTION A – READING

1. (i) (b) Climate change may worsen the availability of fresh water in the world.
  - (ii) the toxic brine reduces dissolved oxygen levels and spikes salt content, and thus destroys marine system on the sea bed
  - (iii) (c) severely damages
  - (iv) falling availability of potable freshwater worldwide
  - (v) it consumes a lot of energy / it is a very costly affair
  - (vi) One, brine has higher salt content than the ordinary seawater and often contains toxic chemicals like chlorine and copper. Two, it is denser than the seawater and sinks to the seafloor and is extremely harmful for the marine life as it reduces oxygen levels in the seawater.
  - (vii) The problem of brine can be solved by mining it for minerals like uranium, strontium, sodium and magnesium and using it for the cultivation of dietary supplement spirulina, as well as for de-icing the roads in winter.
  - (viii) Such readers must consider themselves lucky that they do not have to suffer from any fresh water shortage. They may view the fresh water scarcity in the Middle Eastern countries and countries like Maldives, Malta and the Bahamas with shock and empathy.
  - (ix) (b) (B) and (D)
2. (i) Stubble burning not only causes the serious problem of air pollution that can harm the environment and can lead to diseases like asthma, it also results in the loss of biodiversity of agricultural lands and deteriorates soil fertility.
  - (ii) rice and wheat are extensively grown in this region, especially in south-east Asia
  - (iii) (c) The glacier has become a major hotspot between the two warring nations.
  - (iv) (b) "My crops produces only negligible amount of stubble."
  - (v) rice
  - (vi) (a) steady rise
  - (vii) Combine harvesters are very versatile and

efficient machines and save time and energy in harvesting crops. However, they are very bulky and expensive, and leave behind huge amount of stubble that is hard to manage or incorporate into the soil.

- (viii) A viable and long-lasting solution to the problem of stubble burning can be breaking the vicious circle of wheat and rice cultivation. We need to introduce crop-diversification.

### SECTION C – LITERATURE

- 7A. (i) simile
  - (ii) it indicates that the mother is much too old and probably does not have long to live
  - (iii) The poet has used the contrasting imagery of 'sprinting' trees and merry children 'sprinting' out of their homes to emphasise the lack of energy and movement that is characteristic of old age. The imagery very aptly sums up the first and final stages of life.
  - (iv) (d) "At her age God knows when I may lose her."
  - (v) (b) hope
  - (vi) True
- 7B. (i) all the pessimistic and negative thoughts or anything that triggers such thoughts
  - (ii) (b) dispelling sadness and gloom
  - (iii) True
  - (iv) aabbcc
  - (v) the universality or all-pervasiveness of beauty in nature / that beauty pervades in all things that are natural
  - (vi) (c) Creates a sense of anticipation and expectation for the reader
- 8A. (i) (a) hyperbole
  - (ii) OBSTINACY: He decided to stay on in the forest till he was able to find and kill the tiger. FURY: Many officers lost their jobs/When the tiger was not found for days and weeks, he doubled the land tax on the village in surrounding forest of which the tiger was supposed to be hiding.
  - (iii) The sheep had begun to disappear frequently from a hillside village, which was an indication that a tiger was hunting them.

- (iv) (c) wit and humour
- 8B.** (i) (a) important/surprising experiences  
(ii) simile  
(iii) FALSE  
(iv) (c) 2 and 5
- 9A.** (i) believes that war and violence are unjustifiable  
(ii) vehemently  
(iii) (b) "I may stay on if Mr Gandhi needs my help."  
(iv) The fight was 'unequal' because the unlettered indigo farmers of Champaran were fighting against the mighty British Government and landlords and the cause was 'just' because the farmers had a right to get their money back from the landlords.
- (v) (a) All except 4  
(vi) (c) self-reliance
- 9B.** (i) The experience of conquering fear of water by successfully diving into the Warm Lake and swimming across it and back.  
(ii) TRUE  
(iii) Death and the terror caused by the fear of death.  
(iv) (b) triumph  
(v) prove the point that fear is the greatest enemy of mankind and people need to learn to manage fear in order to face dangers and challenges in life on their way to success.  
(vi) (d) Option 4